



Delaware Citizens Academy

History

March 4, 2010

Early Residents

- Delaware Tribe, made up of Mingo's and Shawnee
- Trappers and traders
- Post Revolution was 'wild west'
- Virginia Military Lands

Berkshire Settlement

- Moses Byxbe, Berkshire County, MA
- Born in 1756
- Age 48 in 1804 when he started west with family.
- Virginia Military Lands

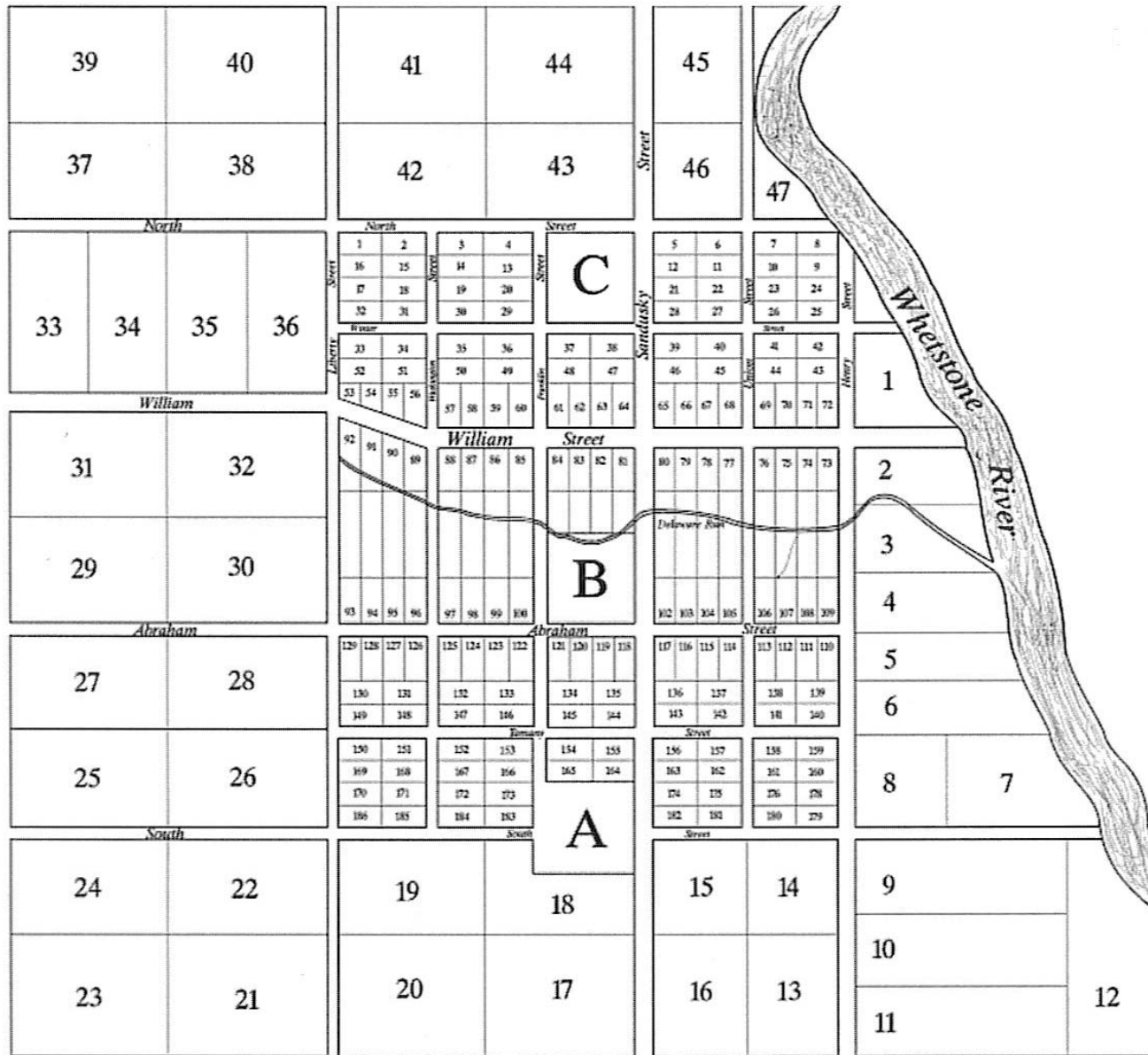
“Baldwinsville”

- Abraham Baldwin, New Haven, Conn.
- Purchased 8,000 acres in 1800
- No children or wife; property went to half-brother, Henry
Baldwin

Baldwin and Byxbe

- Henry Baldwin, Pittsburgh
- Moses Byxbe gains possession of land from Baldwin
- Turns attention to this area, away from Berkshire settlers
- East side or west side?
- May 9, 1808: “plan of the town of Delaware” platted

The Plat Map



The plan of the Town of Delaware

This Town is laid off into one hundred and eighty six lots containing by estimation seventy seven & one half square poles each be the same more or less six & fourth rods by twelve & one half Rods excepting lots No. 53-54-55-56-89-90-91 & 92. Which is by the variation of William Street from west 17" to the north from Washington Street to Liberty Street. The Streets which run from north to south are Henry, Union, Sandusky, Franklin, Washington & Liberty Streets & those running from east to west are North, Winter, William, Abraham, Tamany & South Streets, which cross the other Streets at right angles.

All the Streets are four poles wide except William, Abraham & Sandusky Streets which are six poles in width. The lots or squares, including Delaware Run, or which are not numbered extending from east to west through the Town is reserved for future disposal, or for the benefit of the Town, as the proprietors may think proper hereafter.

.The ground for a parade or other public uses.

.Public square intended for public buildings.

.The burial ground & for religious purposes.

The larger squares are Out Lots & vary in size as will appear by their respective numbers

May 9, 1808

Henry Baldwin, Moses Byxbe

By their Attorney, Moses Byxbe, Jr.

Public Places

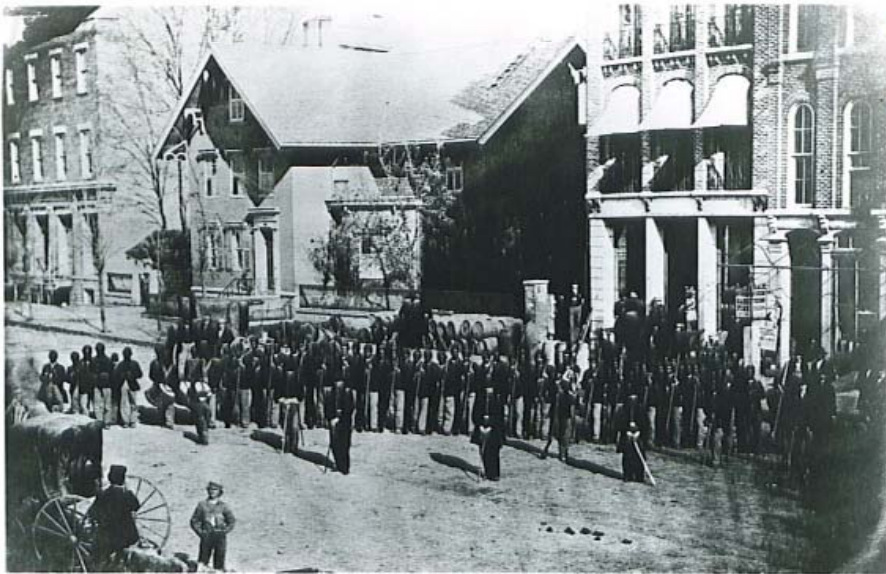
- 'Abraham' Street, 'Henry' Street and 'William' Street
- 'Winter,' for, 'Witter;' Mrs. Moses Byxbe
- Parade ground to Bicentennial Park

Capitol City

- 1803-1810 Chillicothe
- 1810 -1812 Zanesville
- **The Byxbe-Baldwin Plan:** Donate the grounds, erect the buildings and sell 4,000 acres in nearby lots, with half of the proceeds going into the state treasury.
- We win! No we don't!

Away We Go!

- War of 1812, Gen. William Henry Harrison
- Post-war arrival of settlers; RB Hayes
- Ohio Wesleyan University founded 1842
- Abolitionists and Underground Railroad
- Camp Delaware
- Railroad and expanding markets



Modern Era

- Proximity to Columbus and growing northern outer belt
- Historic periods of growth and prosperity, has greatly influenced the economy of Delaware
- Preservation; comfortable scale, “home town” pace of life